



**SPLIT TYPE
ROOM AIR CONDITIONER**
CEILING WALL type

**SERVICE
MANUAL**

Models	Indoor unit	Outdoor unit
	AWG14UBBJ	AOG14USBJ



CONTENTS

SPECIFICATIONS 1
 OUTLINE AND DIMENSIONS 2
 REFRIGERANT SYSTEM DIAGRAM 3
 ERROR CONTENTS 4
 CIRCUIT DIAGRAM 5
 INDOOR PRINTED CIRCUIT BOARD
 CIRCUIT DIAGRAM 6
 DISASSEMBLY ILLUSTRATION 7
 PARTS LIST20

S P E C I F I C A T I O N S

TYPE	COOL & HEAT
INDOOR UNIT	AWG14UBBJ
OUTDOOR UNIT	AOG14USBJ
COOLING CAPACITY (kW)	4.20
HEATING CAPACITY (kW)	4.60

ELECTRICAL DATA

POWER SOURCE (V)	230	
FREQUENCY (Hz)	50	
RUNNING CURRENT (A)	COOLING	6.5
	HEATING	5.7
INPUT WATTS (kW)	COOLING	1.45
	HEATING	1.28
E.E.R. (kW/kW)	COOLING	2.90
	HEATING	3.59
MOISTURE REMOVAL (ℓ/hr)	1.6	
AIR CIRCULATION-Hi (m ³ /hr)	650	

COMPRESSOR

TYPE	Hermetic type, Deposit electrode condenser, 2 poles, Single phase, Induction motor, Rotary
DISCRIMINATION	80236035B
REFRIGERANT R410A (g)	1,150

FAN MOTOR

POWER SOURCE (V)	230	
INDOOR UNIT	DISCRIMINATION	MFD-30HO
	HI-SPEED (r.p.m.)	1,000
	MED-SPEED (r.p.m.)	910
	LO-SPEED (r.p.m.)	820
OUTDOOR UNIT	DISCRIMINATION	MFB-14NTT
	HI-SPEED (r.p.m.)	750

DIMENSIONS

INDOOR UNIT H x W x D (mm)	270 x 1,150 x 285
OUTDOOR UNIT H x W x D (mm)	530 x 750 x 250

WEIGHT

INDOOR UNIT GROSS / NET (kg)	20 / 16
OUTDOOR UNIT GROSS / NET (kg)	37 / 35

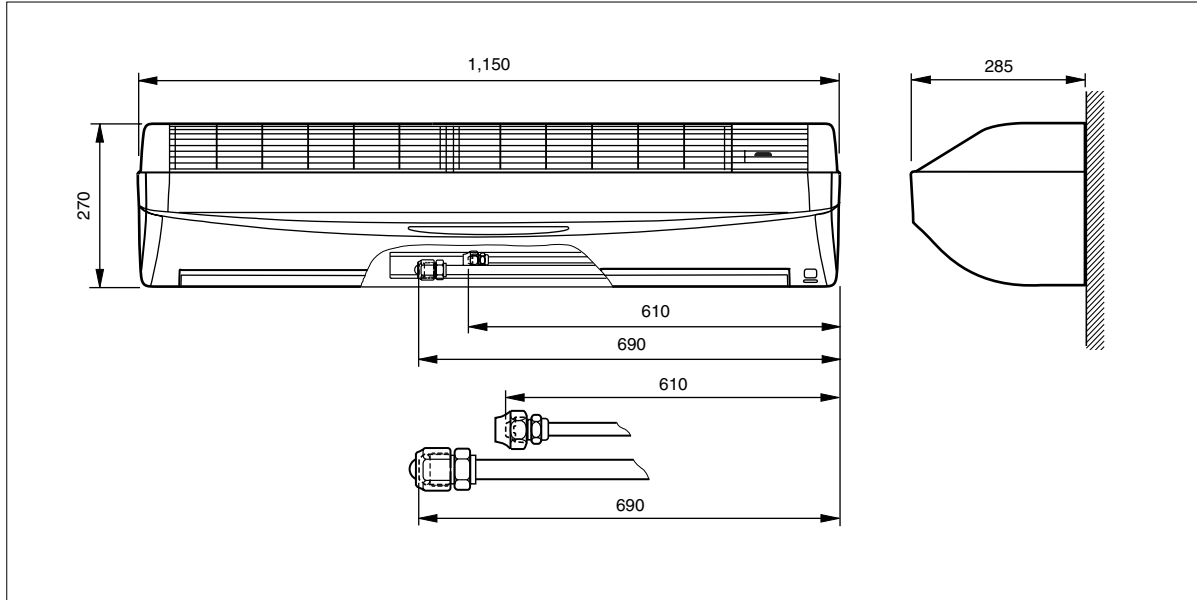
REFRIGERANT CHARGE (R-410A)

FULL CHARGE AMOUNT	PIPE LENGTH 7.5 m (25 ft)	1,150 g (40.6 oz)
	10 m (33 ft)	1,187 g (41.9 oz)
	15 m (49 ft)	1,262 g (44.5 oz)
Additional refrigerant		15 g (0.53 oz) / 1 m (3.3 ft) (over 7.5 m)

OUTLINE AND DIMENSIONS

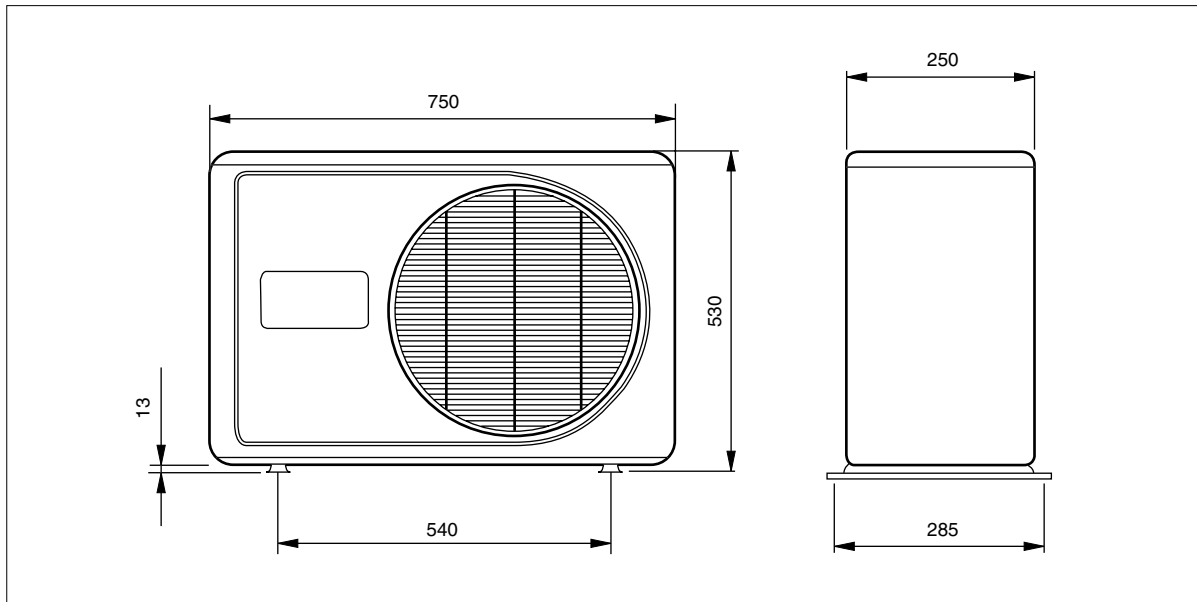
Model : AWG14UBBJ

Unit : mm



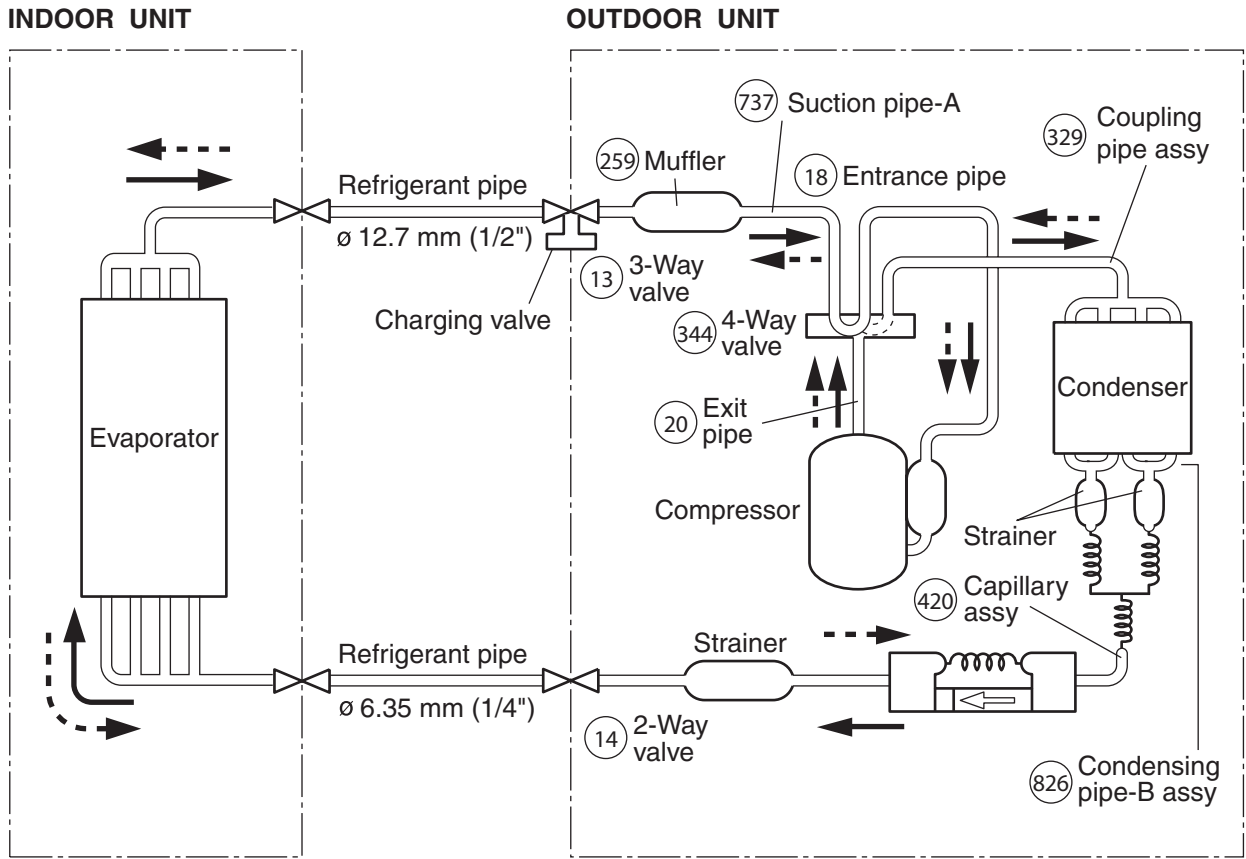
Model : AOG14USBJ

Unit : mm



REFRIGERANT SYSTEM DIAGRAM

Models : AWG14UBBJ / AOG14USBJ



: Cooling
 : Heating
 : Flare coupling

E R R O R C O N T E N T S

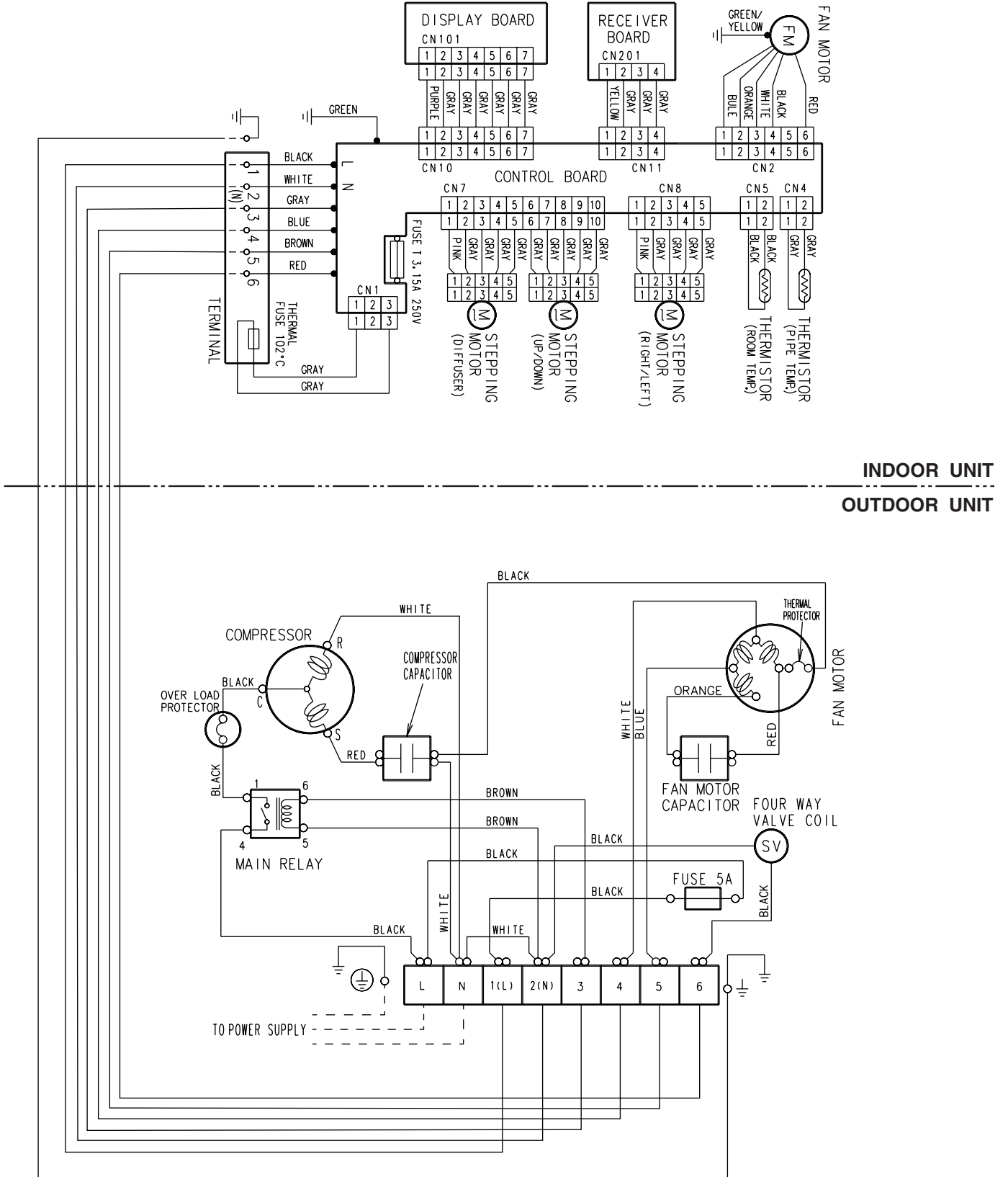
The OPERATION, TIMER and SWING lamps operate as follows according to the error contents.

○ : Fast flashing ● : Slow flashing – : Off

Error contents	Error display		
	OPERATION (RED)	TIMER (YELLOW)	SWING (ORANGE)
Indoor unit circuit board error	○	○	–
Indoor unit room temperature sensor wire opened	2 times ●	○	–
Indoor unit room temperature sensor wire short circuited	2 times ●	○	○
Indoor unit piping sensor wire opened	3 times ●	○	–
Indoor unit piping sensor wire short circuited	3 times ●	○	○
Indoor unit fan error	6 times ●	○	–

CIRCUIT DIAGRAM

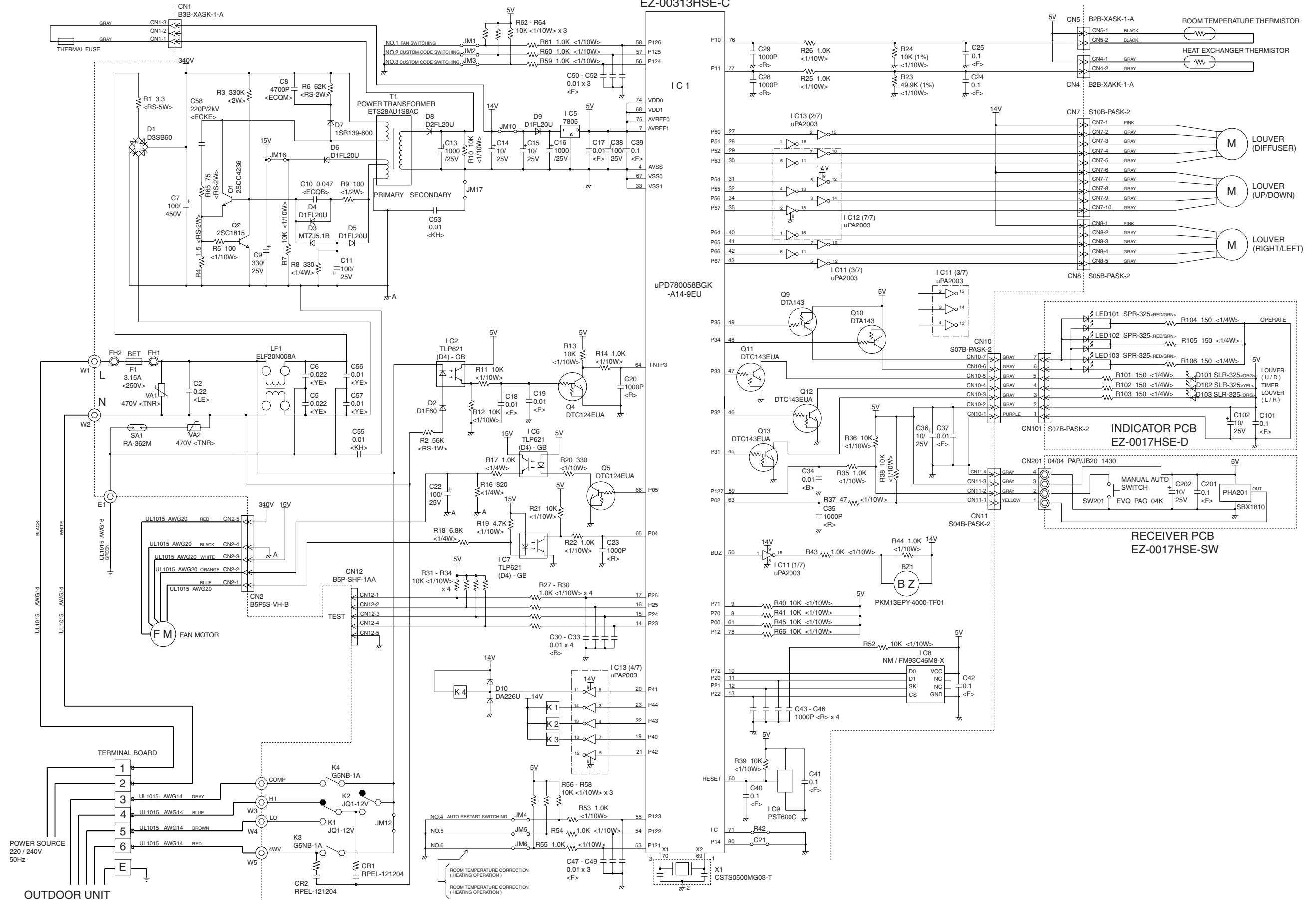
Models : AWG14UBBJ / AOG14USBJ



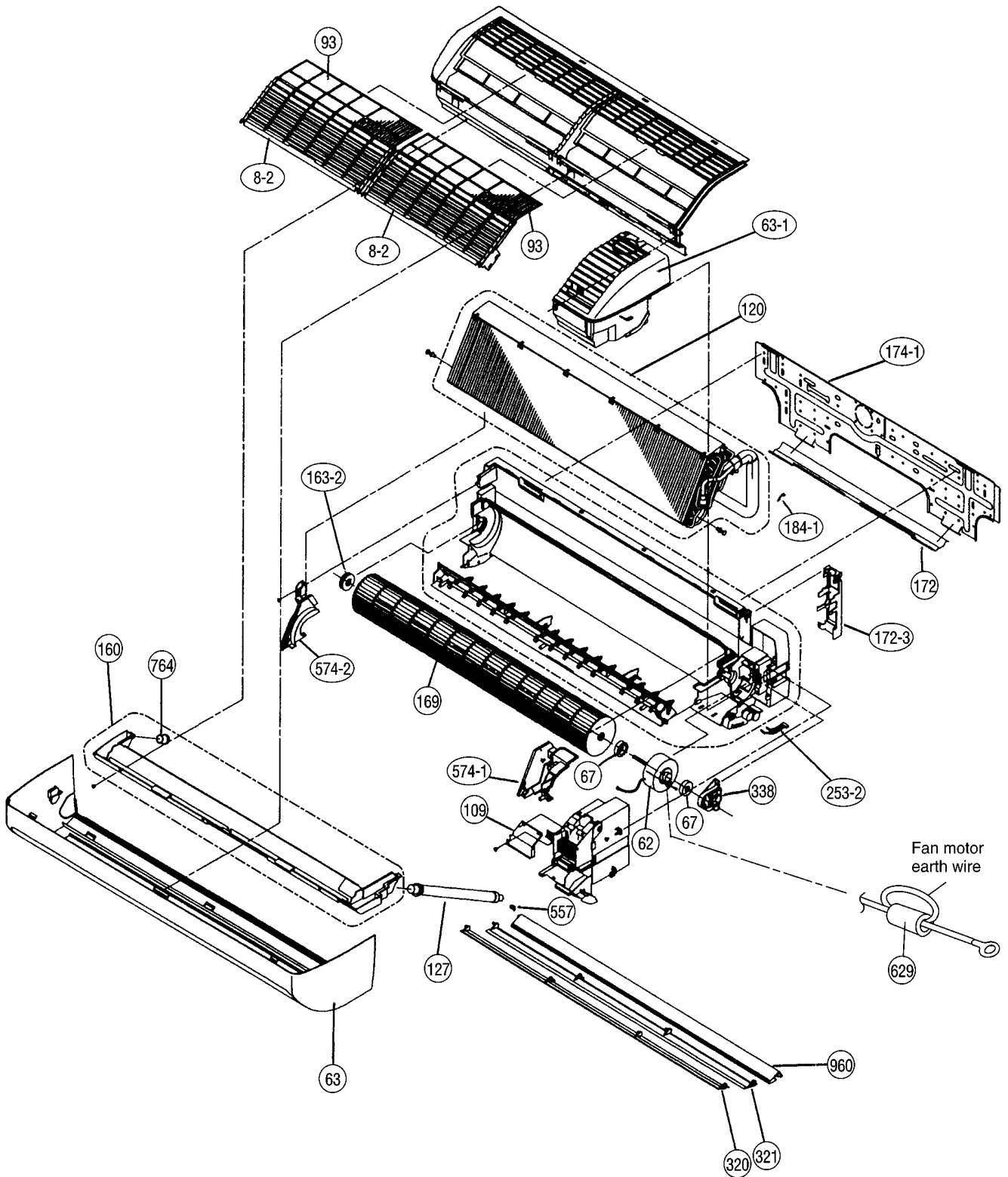
INDDOOR PRINTED CIRCUIT BOARD CIRCUIT DIAGRAM

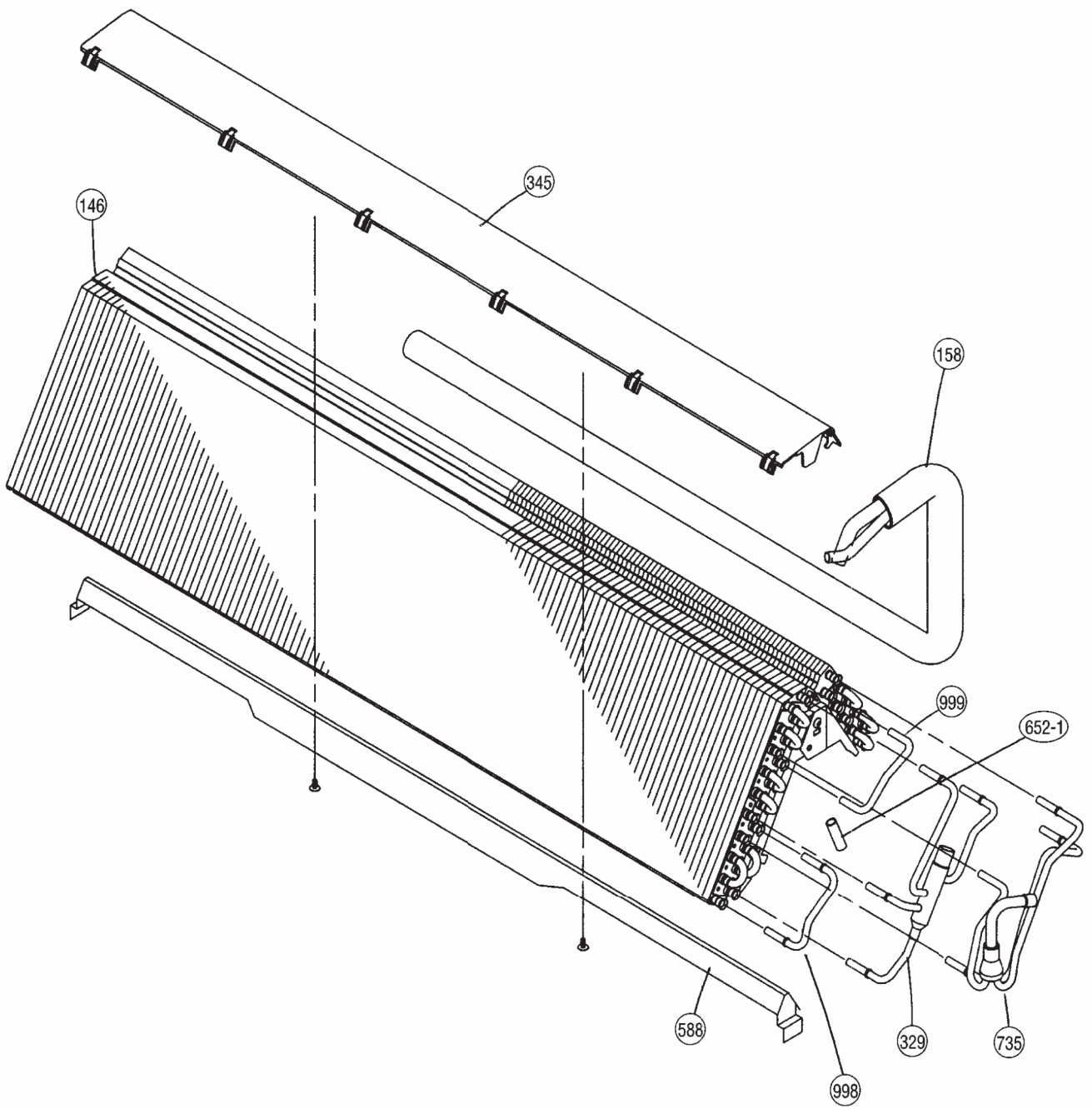
Model : AWG14UBBJ

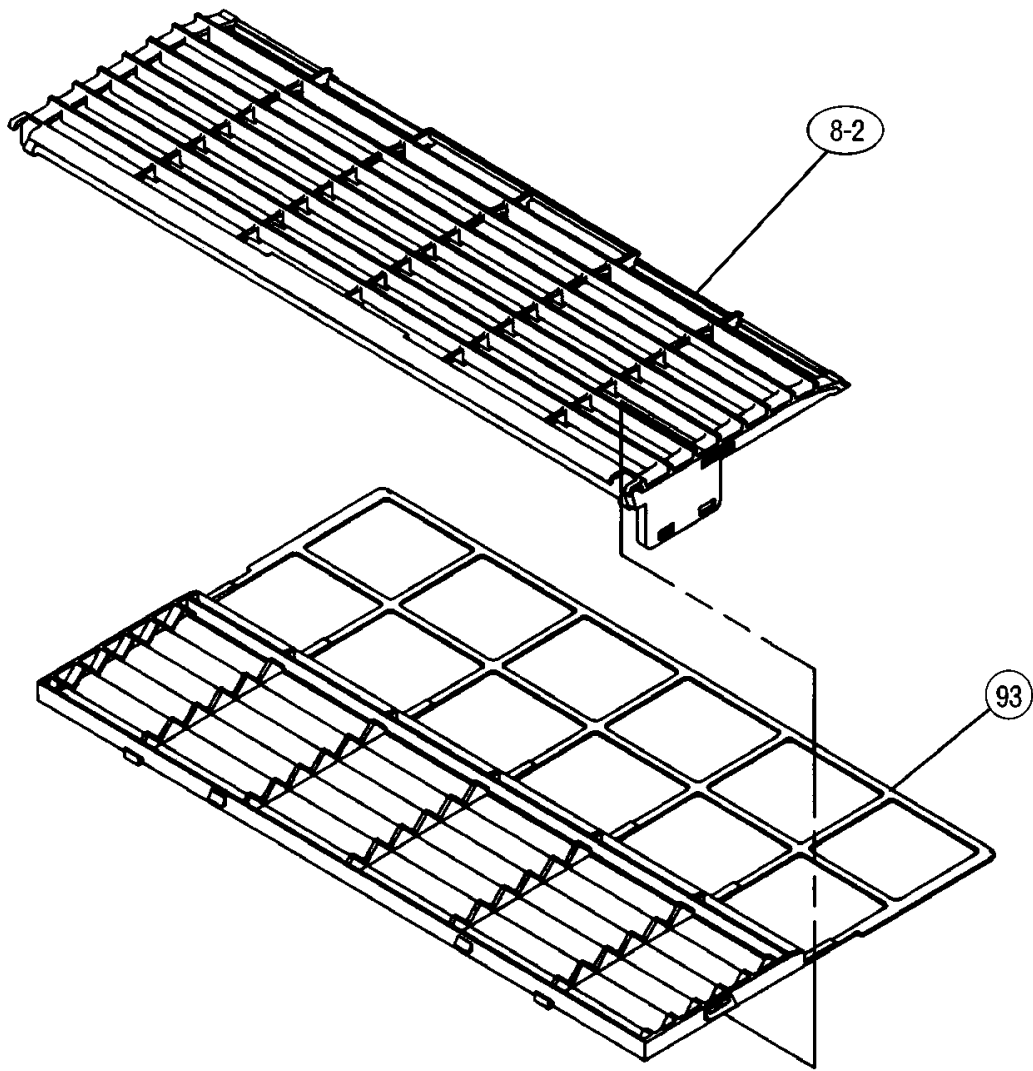
CONTROLLER PCB ASSEMBLY (MAIN PCB)
EZ-00313HSE-C

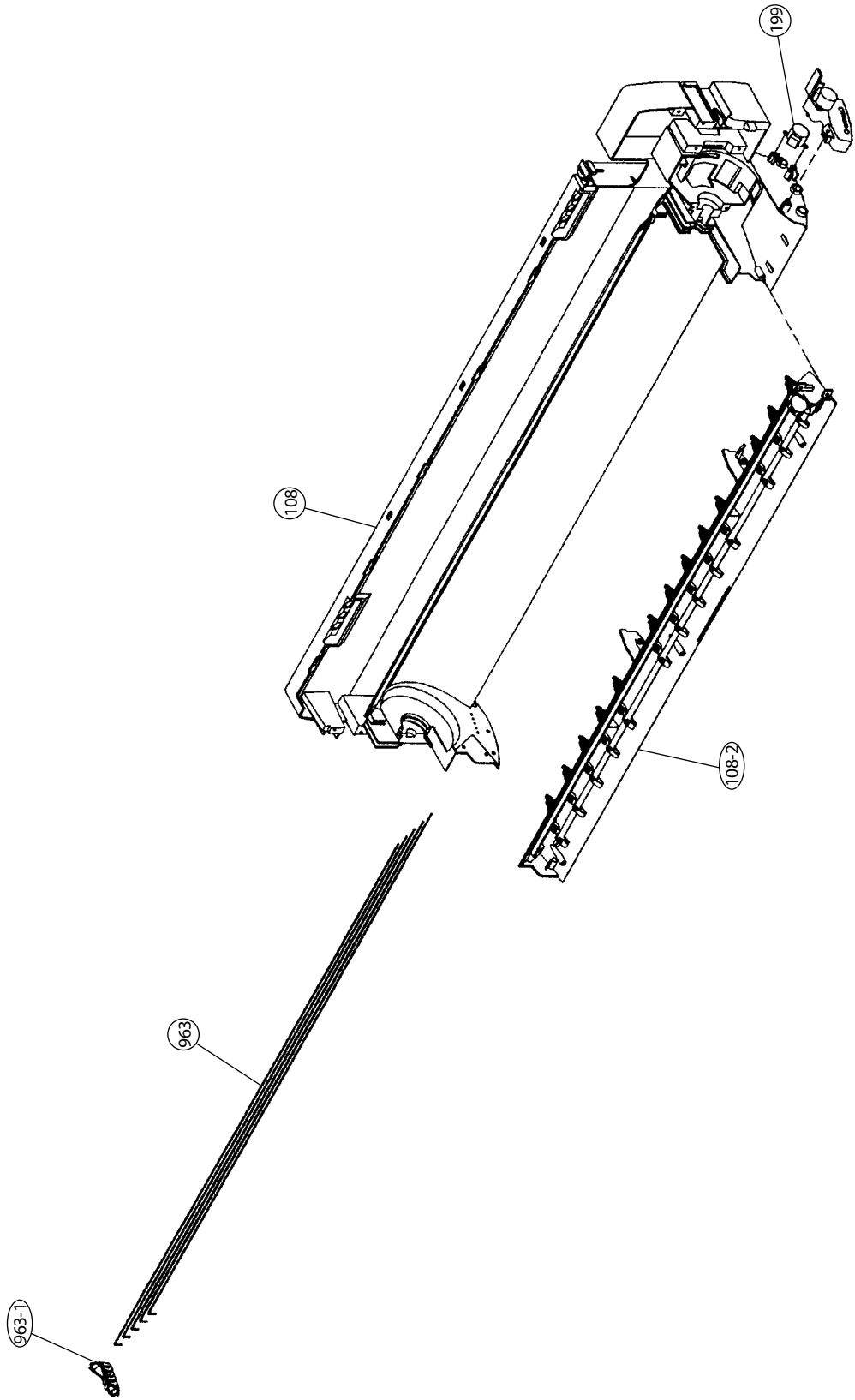


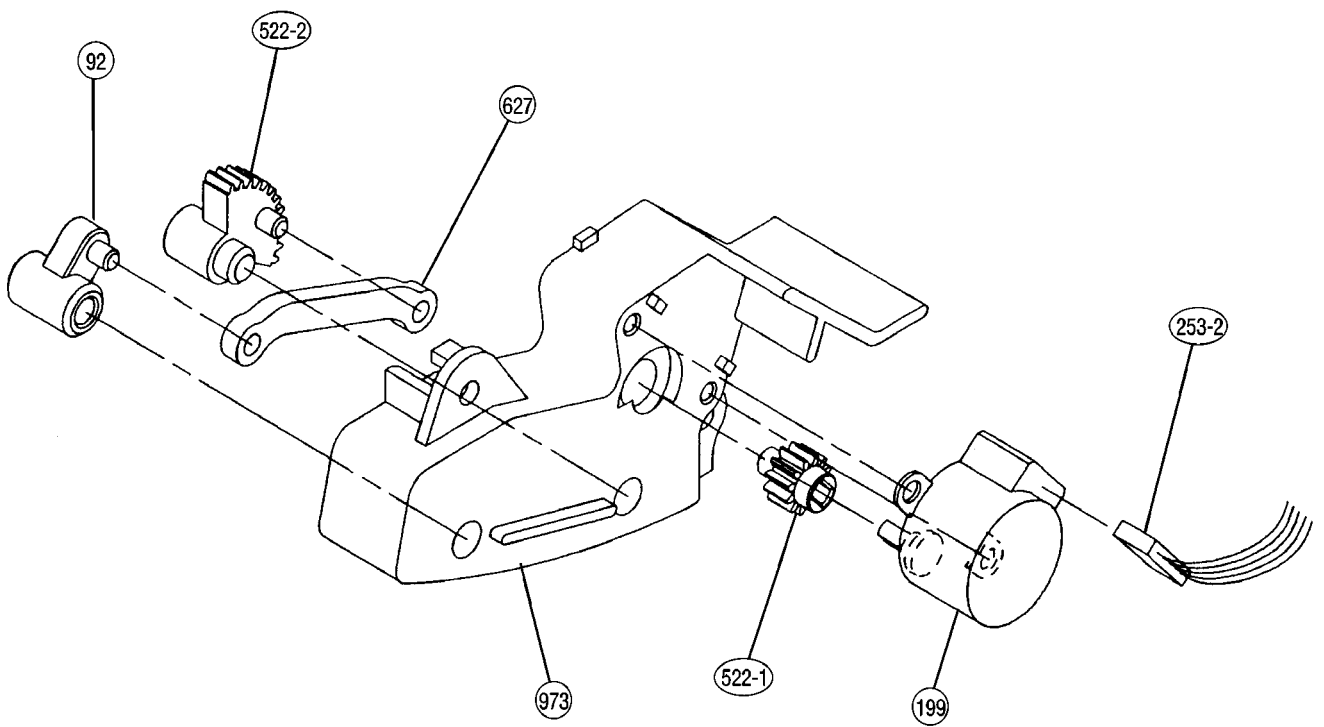
DISASSEMBLY ILLUSTRATION



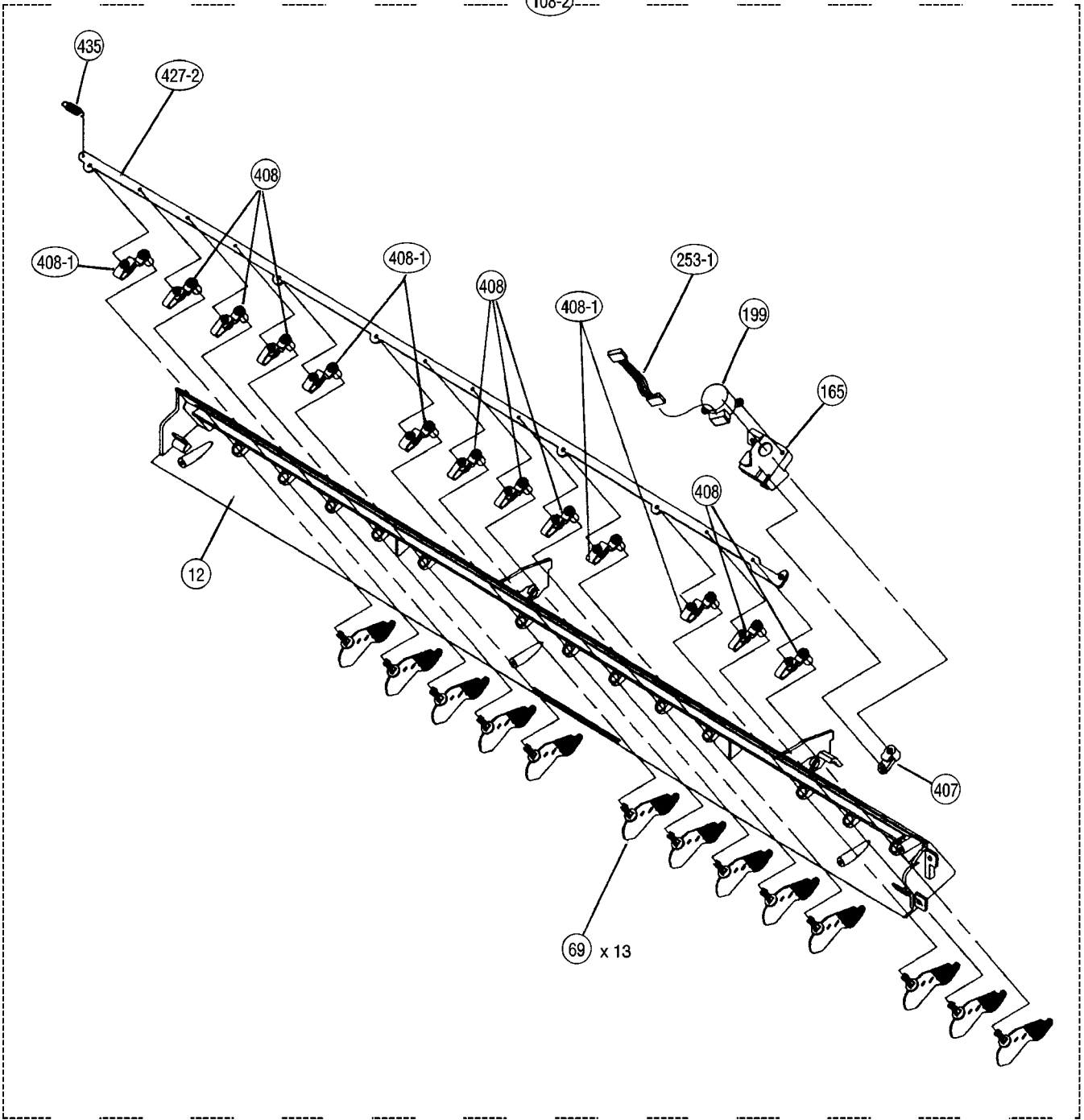


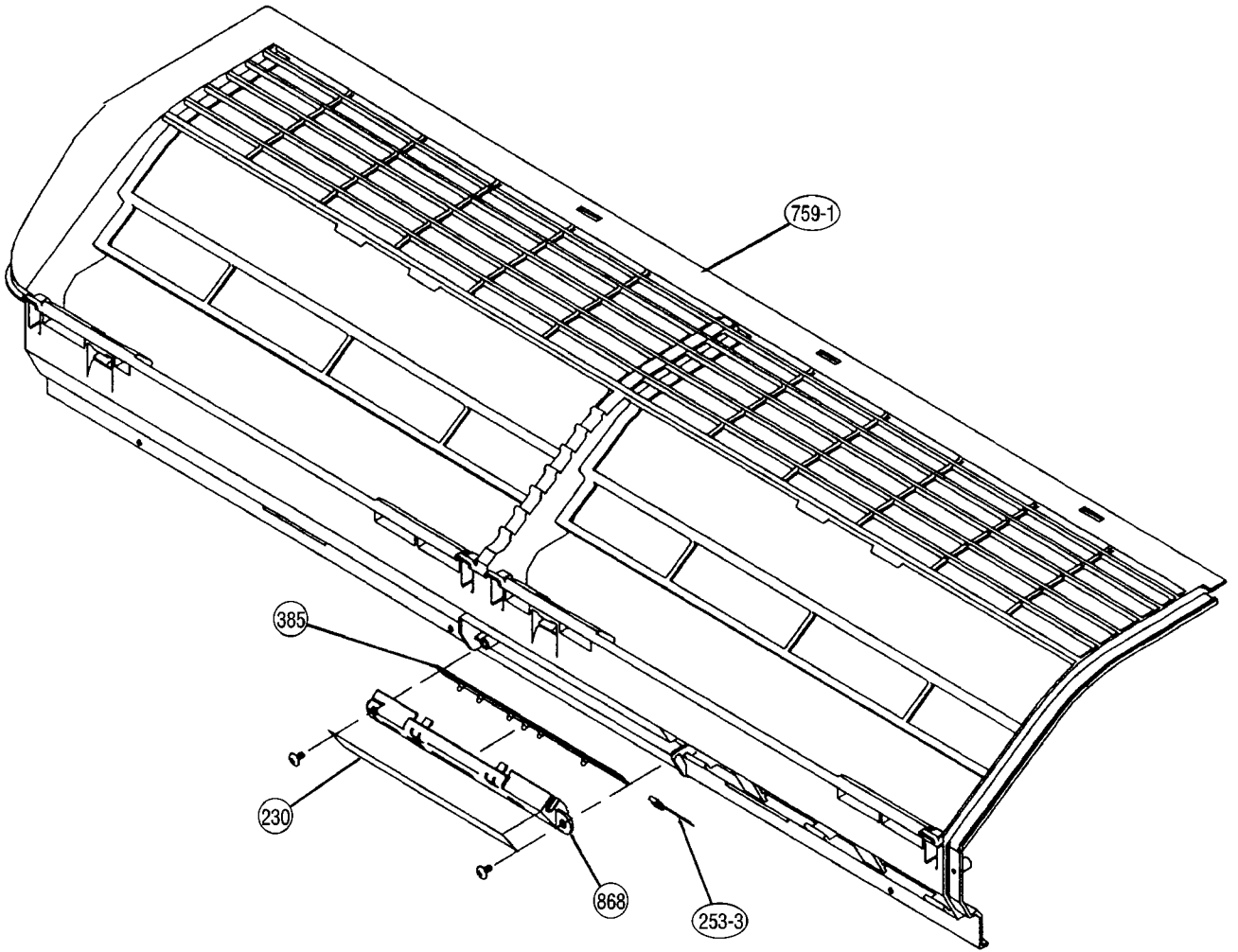




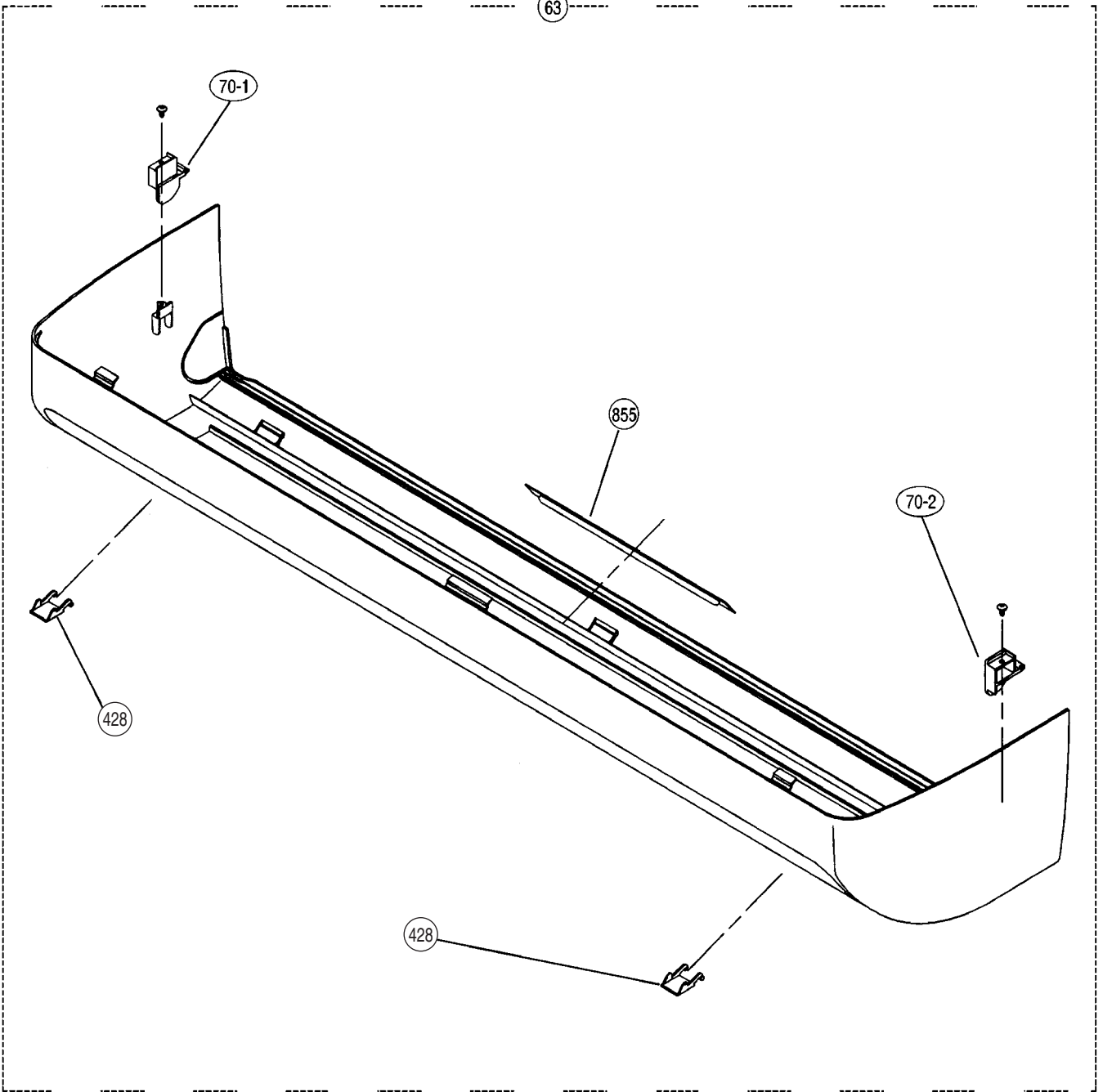


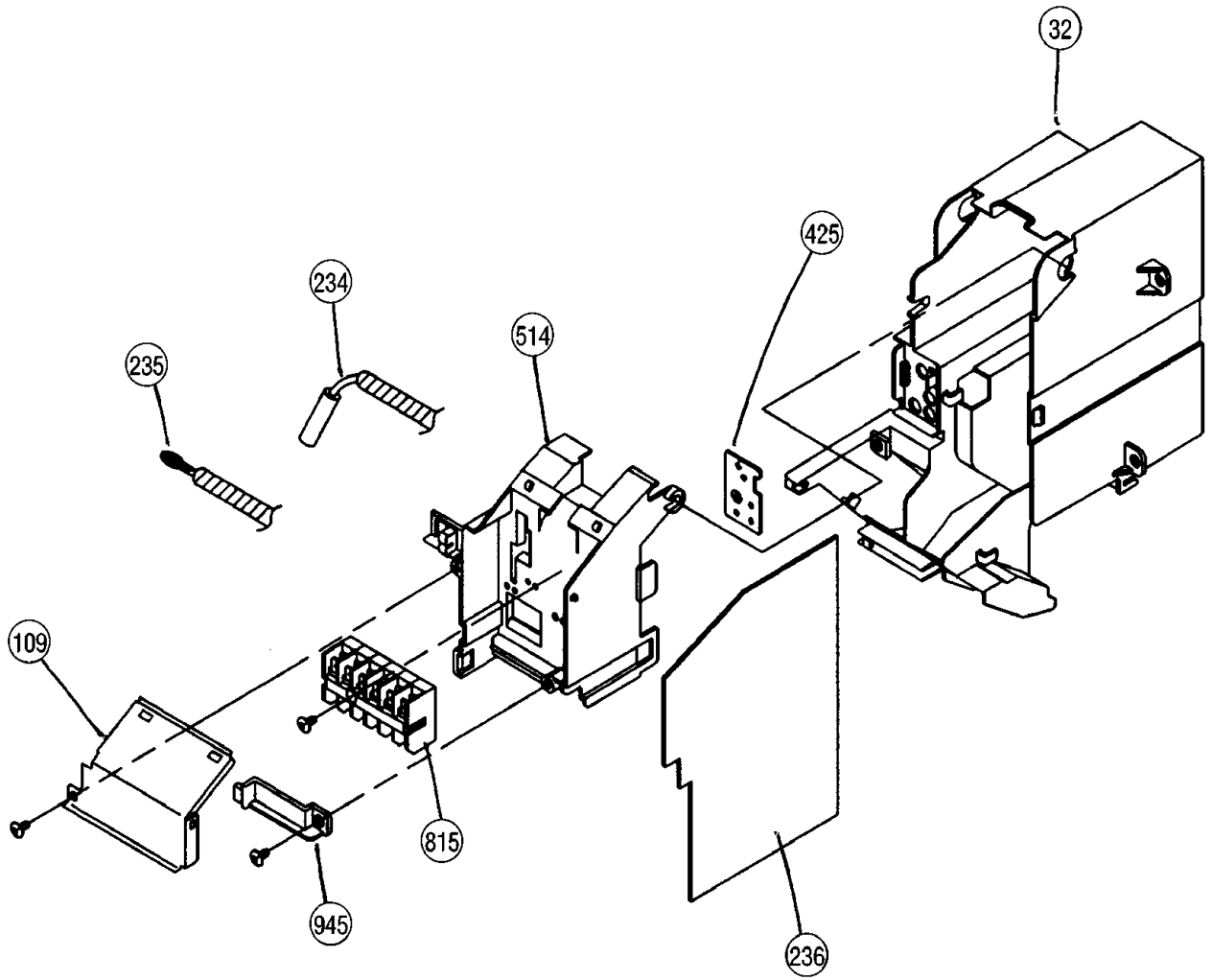
108-2



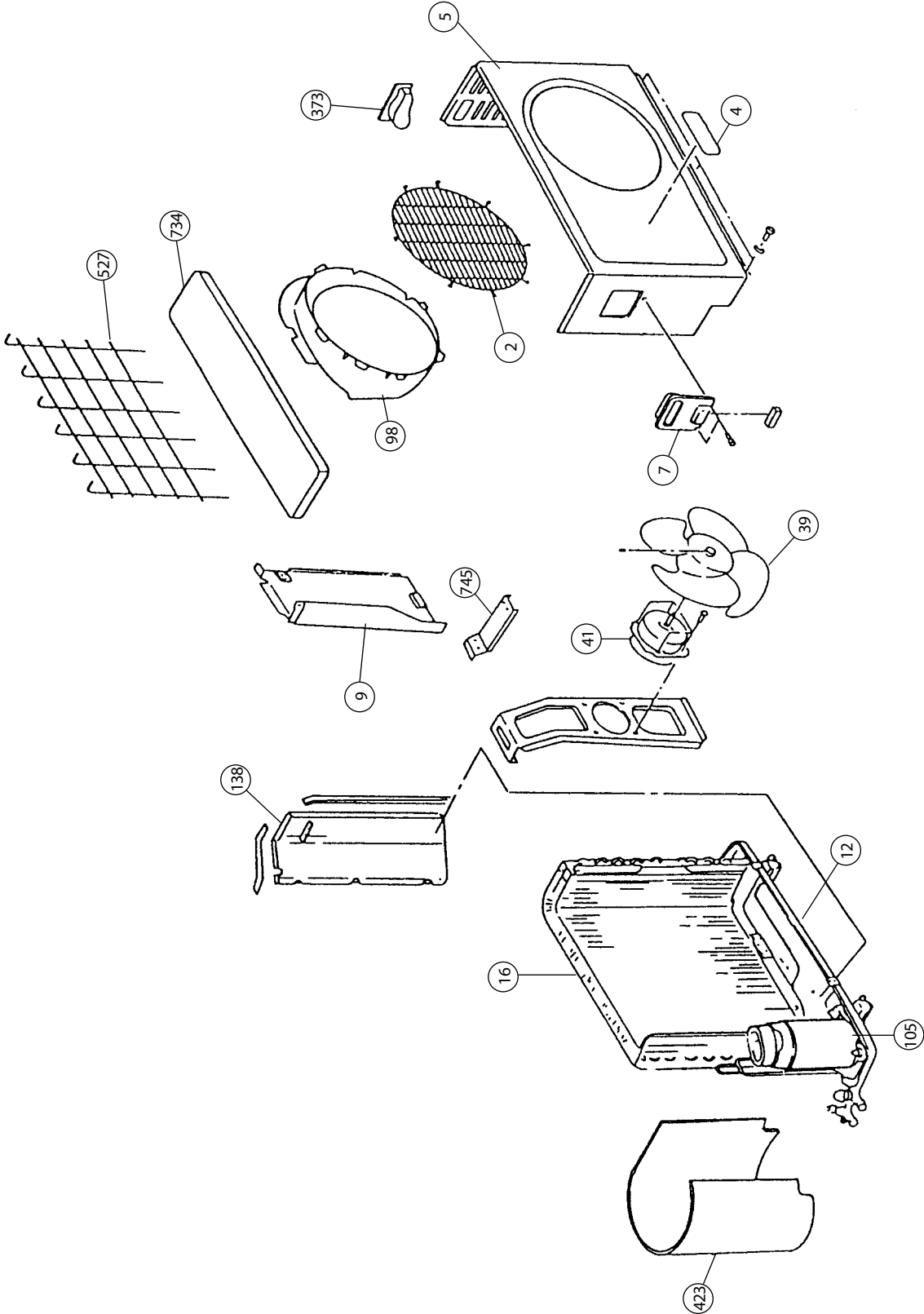


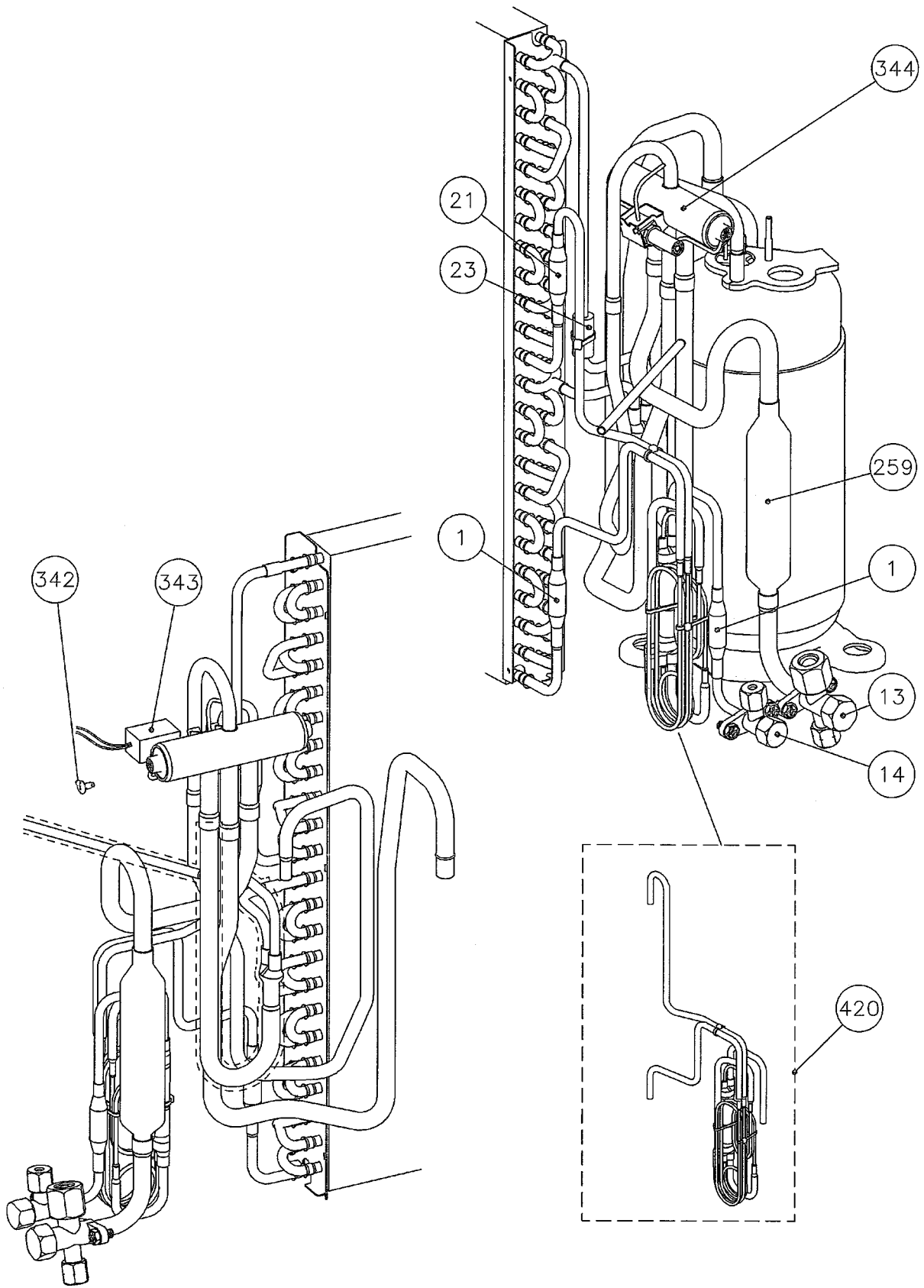
63

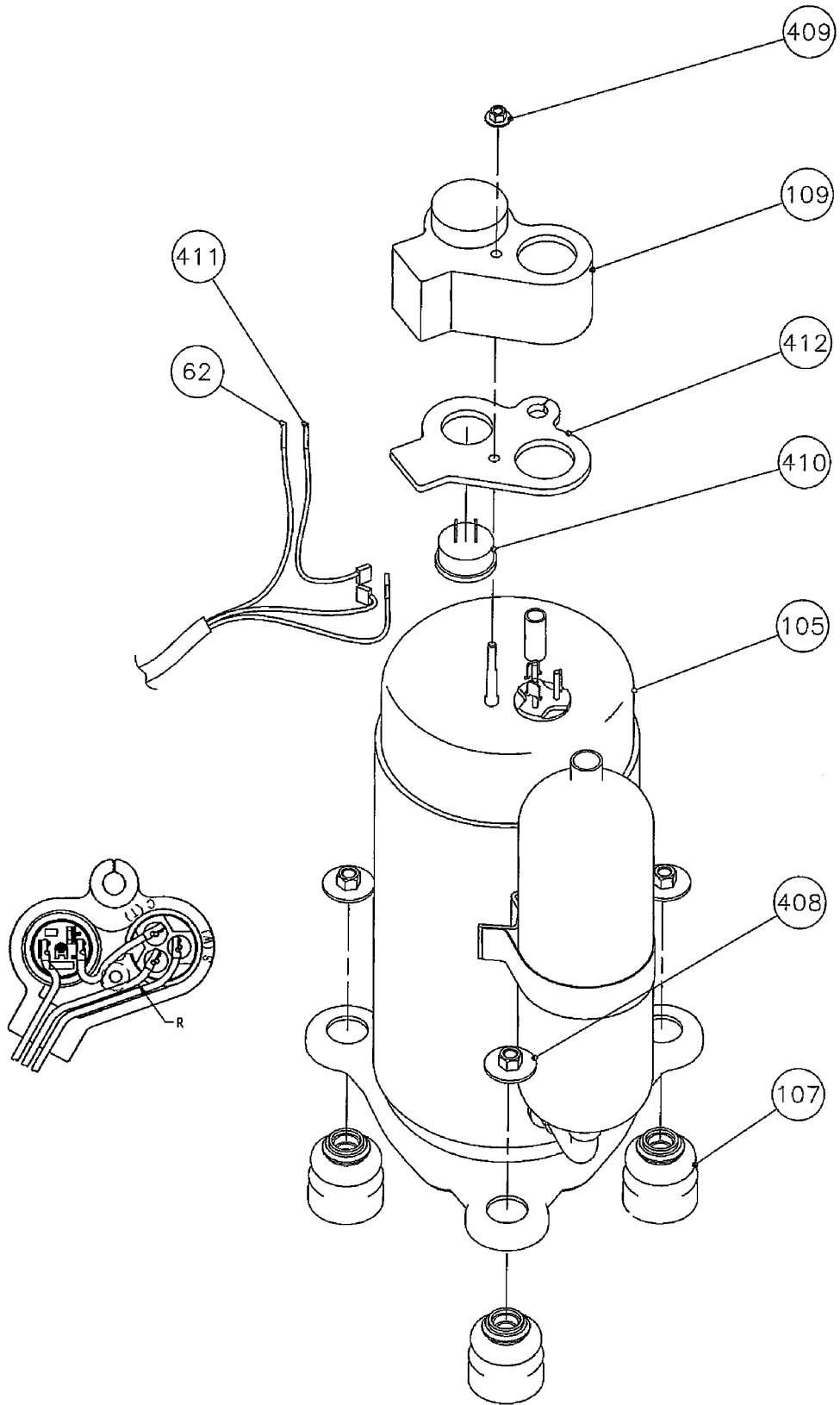


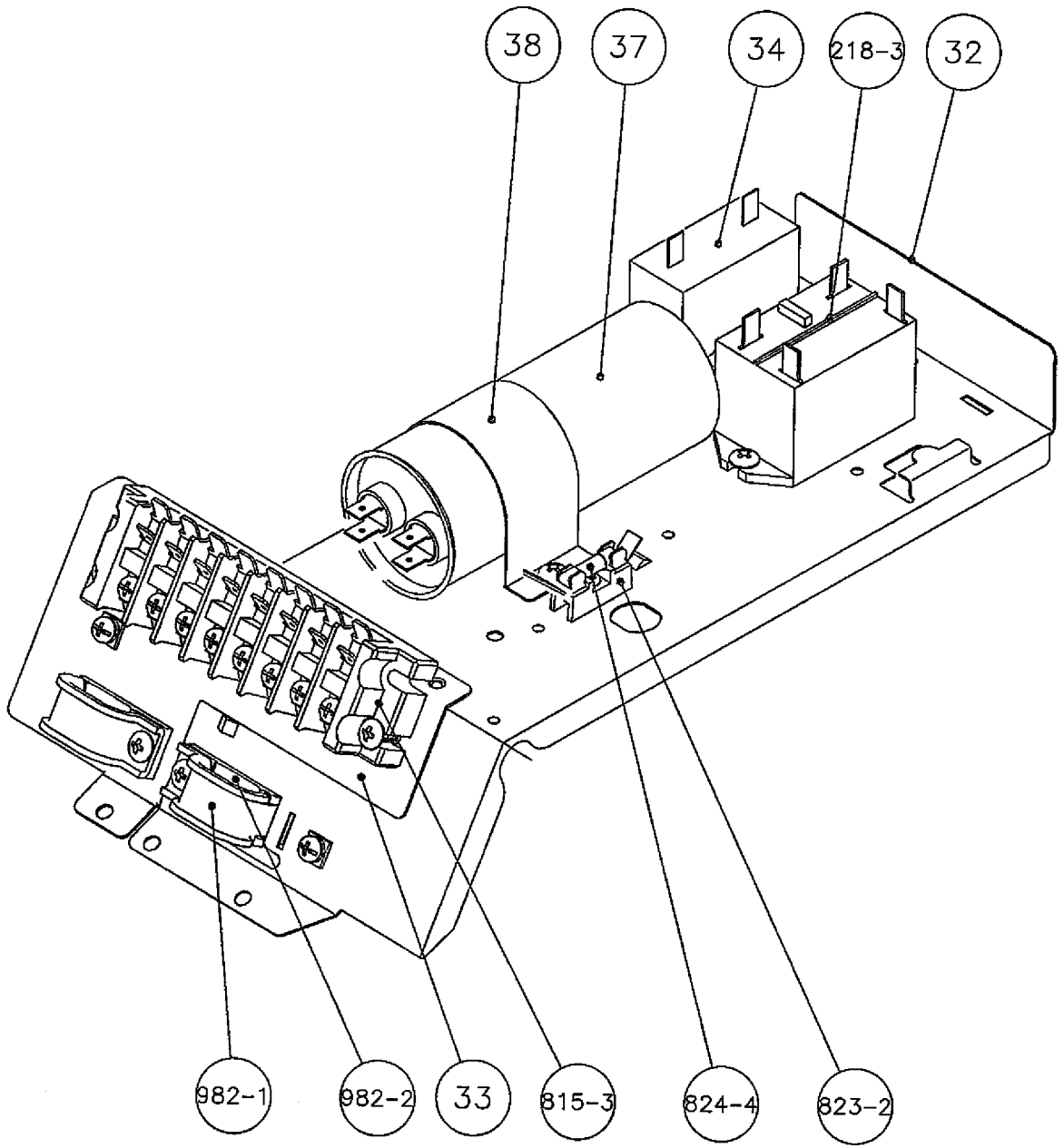


Model : AOG14USBJ









PARTS LIST

INDOOR UNIT

When you order parts, please make a photocopy of this page and fill the number of the parts in the "Order" column.

Ref. No.	Description	Part No.	Ord. Q'ty
		AWG14UBBJ	
8-2	Filter Frame	9367681013	
12	Base-B	9368216016	
32	Control Box	9367663002	
45	Bracket (Eva.) Assy	9369317019	
62	Fan Motor-Inner	9601385011	
63	Front Cover Sub Assy (KIT)	9371132020	
63-1	Service Cover Assy	9368837013	
67	Rubber (Motor)	9367676002	
69	Louver	9367706013	
70-1	Hook (Cover)-L	9367675012	
70-2	Hook (Cover)-R	9367674015	
92	Link Arm	9367694006	
93	Filter	9367680016	
108	Base	9367683017	
108-2	Base-B Sub Assy	9368843014	
109	Terminal CVR	9368022006	
122	Rub (Bearing) Assy	9368998004	
127	Drain Hose	9367695003	
146	Evaporator Assy	9371488028	
158	Joint Pipe Assy	9369224003	
160	Drain Pan Assy	9368835019	
165	Motor Box	9367718009	
169	Cross Fan Assy	9367708000	
172	Pipe Bracket	9367844005	
172-3	Pipe Holder (KIT)	9371135014	
174-1	Fixing Plate	9367987009	
184-1	Thermo. Spring-A	313728262708	
199	Stepping Motor	9900020019	
230	Diffusion Sheet	9368006013	
234	Thermistor Assy-Room	9703299148	
235	Thermistor Assy-Pipe	9703297038	
236	Controller PCB Assy	9704360144	
240	Remote Control Unit	9371190013	
253-1	Wire With Connector	9704434012	
253-2	Wire With Connector	9704435019	
253-3	Wire With Connector	9704433015	
320	Upper Flap	9367688012	
321	Lower Flap	9367689019	
329	Coupling Pipe Assy	9368865009	
338	Motor Holder	9367798001	

Ref. No.	Description	Part No.	Ord. Q'ty
		AWG14UBBJ	
385	Indicator PCB Assy	9704368010	
407	Motor Link	9367696000	
407-2	Louver Rod	9367698004	
408	Louver Link	9367697007	
408-1	Louver Link-B	9368789008	
425	Earth Plate	9368017002	
428	Screw Cover	9367717019	
435	Louver Spring	9369030000	
514	Control Box Cover	9367664009	
522-1	Gear-A	9367691005	
522-2	Gear-B	9367692002	
557	Spring (Diffuser)	9368824006	
574-1	Eva Support-R	9367684007	
574-2	Eva. Support-L (KIT)	9371129013	
627	Link	9367693009	
629	EMI Filter	0400056133	
652-1	Thermo. Holder Pipe	313806262805	
735	Distributor Assy	9368858001	
743	Remote Control Holder	9305642014	
759-1	Intake Cover	9367678013	
764	Drain Cap	9367677009	
815	Terminal	9900016012	
855	Display-F	9367673018	
868	PWB Holder (Display)	9371131016	
875	PCB Assy-Switch	9704370013	
945	Wire Holder	9368016005	
960	Diffuser Assy	9368840013	
963	Fanguard	9368015008	
963-1	Fanguard Holder	9367707003	
973	Gear Box	9367690008	
998	Bypass Pipe-A	9368857004	
999	Bypass Pipe-B	9368917005	

OUTDOOR UNIT

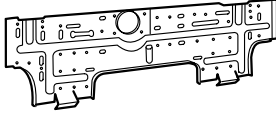
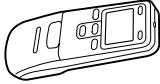
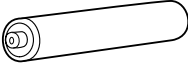
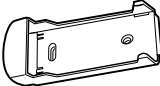


When you order parts, please make a photocopy of this page and fill the number of the parts in the "Order" column.

Ref. No.	Description	Part No.	Ord. Q'ty
		AOG14USBJ	
1	Strainer Assy	9366602019	
2	Fan Cover	9304109006	
4	Emblem-Rear	313698088313	
5	Cabinet, Painted	9302936017	
7	Connector Cover	9357970004	
9	Cabinet, Rear Panel	9303744017	
12	Base Assy, Painted	9310889077	
13	3-Way Valve	9372205105	
14	2-Way Valve	9372204030	
16	Condenser Assy	9373131014	
23	Rubber (Discharge Pipe)	313185159802	
32	Control Box Metal-A	9355843003	
33	Terminal Holder	9373090014	
34	Capacitor (Fan Motor)	9704305039	
37	Running Capacitor	9704436139	
38	Capacitor Clamp Metal	313468061808	
39	Propeller Fan Assy	9351589011	
41	Fan Motor Assy-Out	9601113096	
62	Wire Assy (Shield)-A	9370945089	
98	Fan Ring	313166296109	
105	Compressor Assy	9373010043	
107	Rubber Seat-A	9351813017	
109	Terminal Cover	9351920012	
138	Separate Wall Assy	9303729014	
218-3	Power Relay	9900074012	

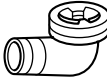
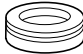
Ref. No.	Description	Part No.	Ord. Q'ty
		AOG14USBJ	
259	Muffler	9372369029	
342	Screw (Solenoid Valve)	9970024016	
343	Solenoid	9900165017	
344	4-Way Valve	9970036019	
373	Grip	313166178700	
408	Special Nut	9307615016	
409	Special Nut	313199233602	
410	Attachment (Ocr Assy)	9373129011	
411	Wire (Compressor-Ocr) A	9357144009	
412	Terminal Gasket	9351921019	
420	Capillary Assy	9372197134	
423	Noise Insulation-F (Comp.)	9350944019	
527	Protection Net	9355444002	
734	Cabinet Top Plate	9302937014	
745	Motor Support	313166036308	
815-3	Terminal-8P	9358660119	
823-2	Fuse Holder	0500063024	
824-4	Fuse	0600222529	
982-1	Cord Clamp	9356857009	
982-2	Cord Clamp-B	9356858006	

STANDARD ACCESSORIES

INDOOR UNIT ACCESSORIES

Name and Shape	Part No.
Wall hook bracket 	9367987009
Remote control unit 	9371190013 (AR-JW1)
Battery (penlight) 	0600185534
Remote control unit holder 	9305642014
Tapping screw (big) (ϕ 4 x 20) 	301141164200
Tapping screw (small) (ϕ 3 x 12) 	301141533125

OUTDOOR UNIT ACCESSORIES (14,000 BTU model)

Name and Shape	Part No.
Drain pipe 	9303029015 [Heat & cool model (Reverse cycle) only]
Drain cap 	313166024302 [Heat & cool model (Reverse cycle) only]

